

Living Green at Parkside

Editorial calendar

Published: Tuesday, April 1, 2008 - 12:18 pm

By Km Hassold
Photographed by Owen Riley Jr.
oriley@greenvillenews.com

Photo galleries:

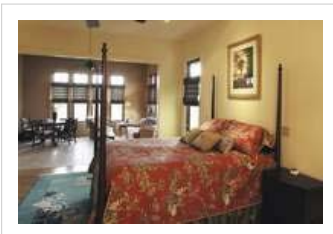
 [Gail Nagel's and Bill Knopf's home](#) (04/03/08)

When Gail Nagel and Bill Knopf had an “epiphany” about where they wanted to live, they may have spent a little time thinking about the kind of neighbors they might enjoy in their new location.



zoom

A love of entertaining led to the large dining area and table with plenty of room for guests. Art collecting in this household is not limited to exotic locations. A favorite painting seen here is actually the work of a Southern artist, Mott Konaharns, displaying a collage and painting technique.



zoom

A master bedroom opens to a “playroom” for Gail to sew or read on one side, and a home office for Bill on the other.

Maybe the couple even knew right away a move would include an environmentally conscious design and location and that a convenient walk downtown or to the park would be a part of their future. But somehow the fact that their new neighbor would be a giraffe named Walter brings this whole tale to a new level for most of us and a story too good not to tell.

Gail Nagel begins by saying that with her kids “launched,” she and husband Bill ended up living in about 1,500 square feet of a much bigger home.

“We only used the bedroom, kitchen, and keeping room in a 150 year-old-home. We were ready to rethink how we wanted to live our lives, and as we talked about it, realized we could do something entirely different.”

In stepped Pat Dilger of Overstreet Studio and Scott Johnston of Johnston Design Group to work with the couple to create Parkside Live/Work, a sustainable urban live/work design overlooking the zoo and settled onto an infill lot within an existing community.

The result is an office for Gail and another tenant downstairs, and a home upstairs Bill says is “so easy to care for, and so private we can sit on our deck without ever seeing anyone.”

Except for Walter, of course ... but then he's family.



zoom

The kitchen was designed with two sinks and open to the adjacent dining area. Both homeowners love to cook, so granite sinks, deep enough for the largest pots and pans, keeps the cooks from “getting in each other's way.”

